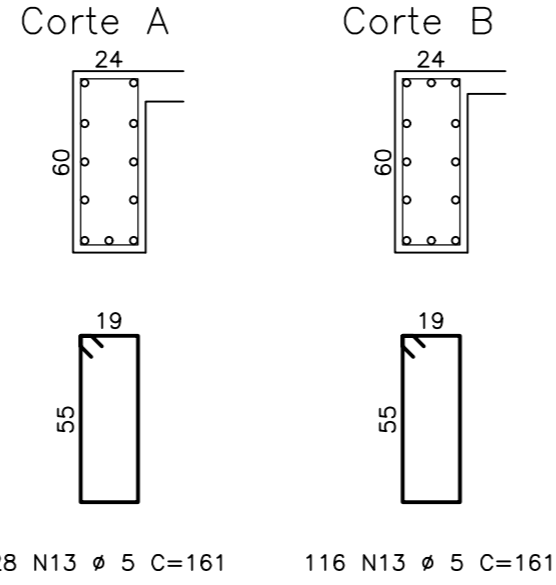
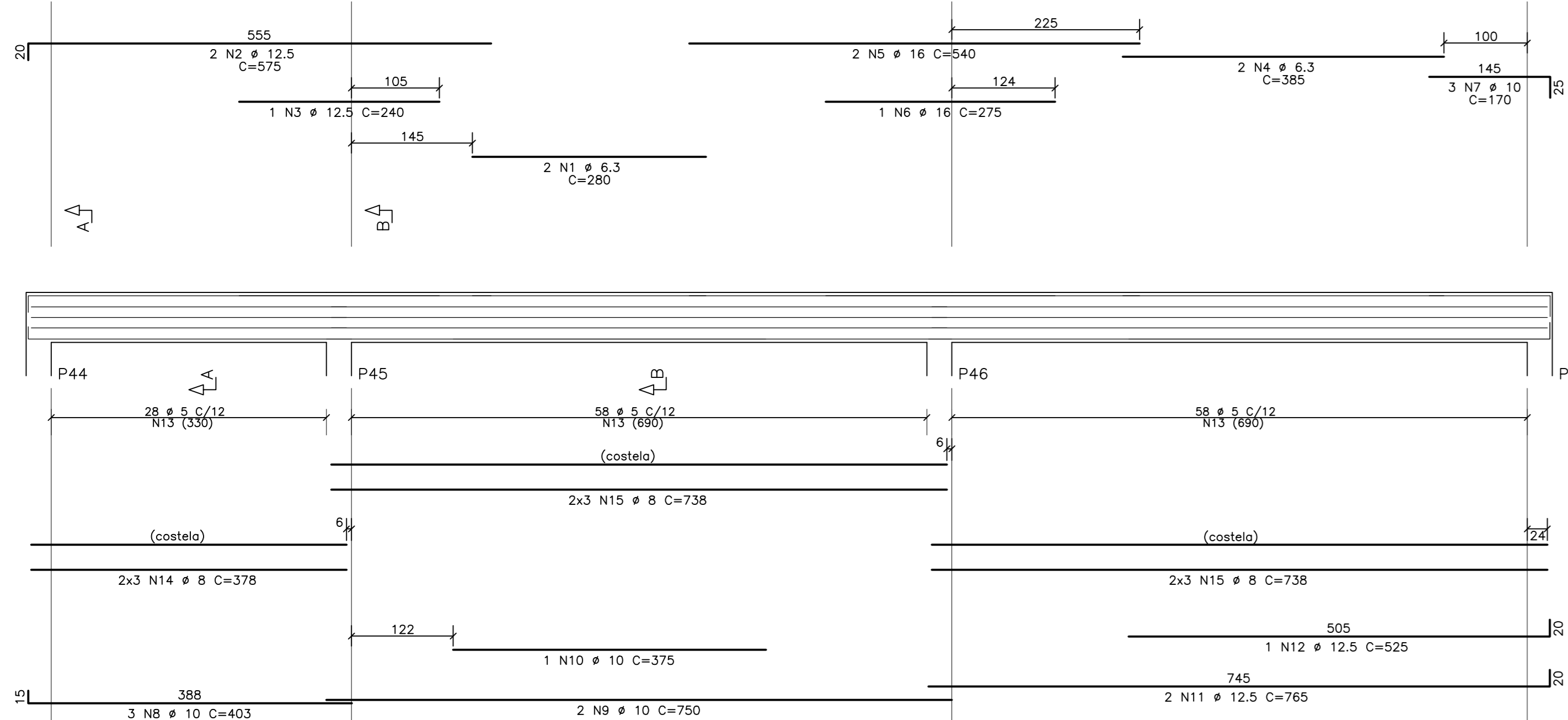
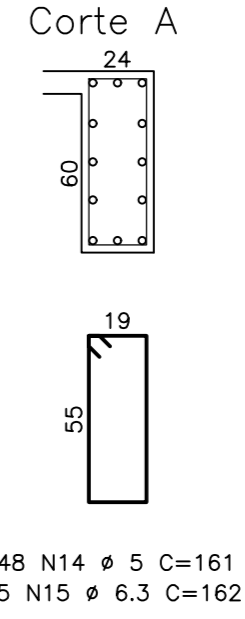
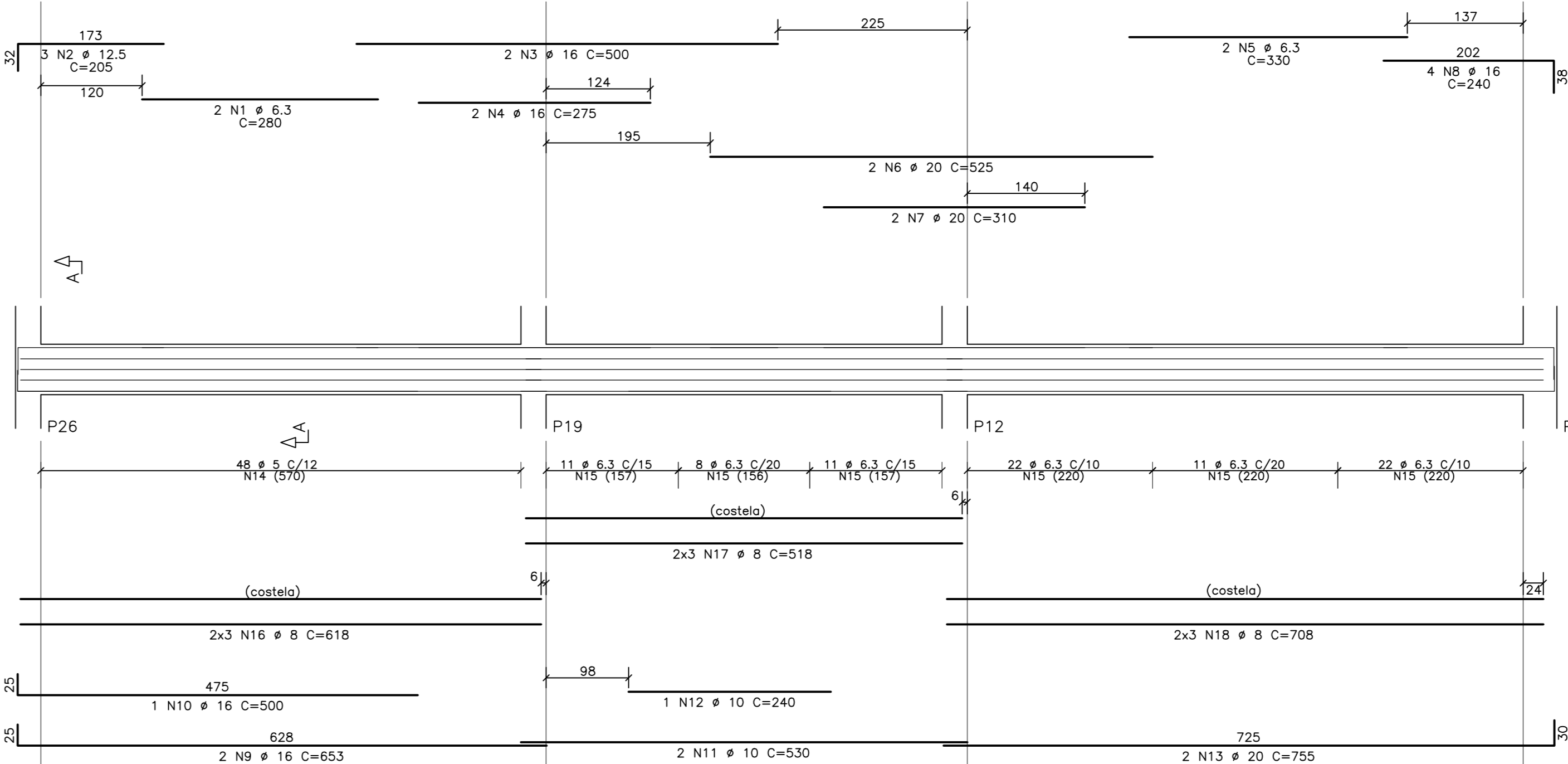
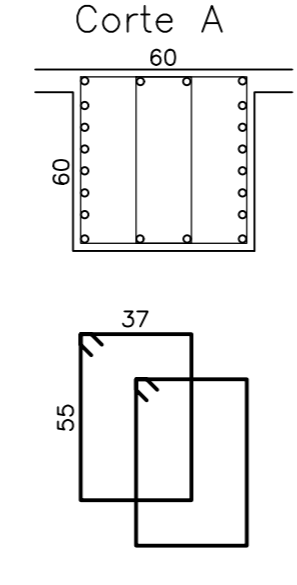
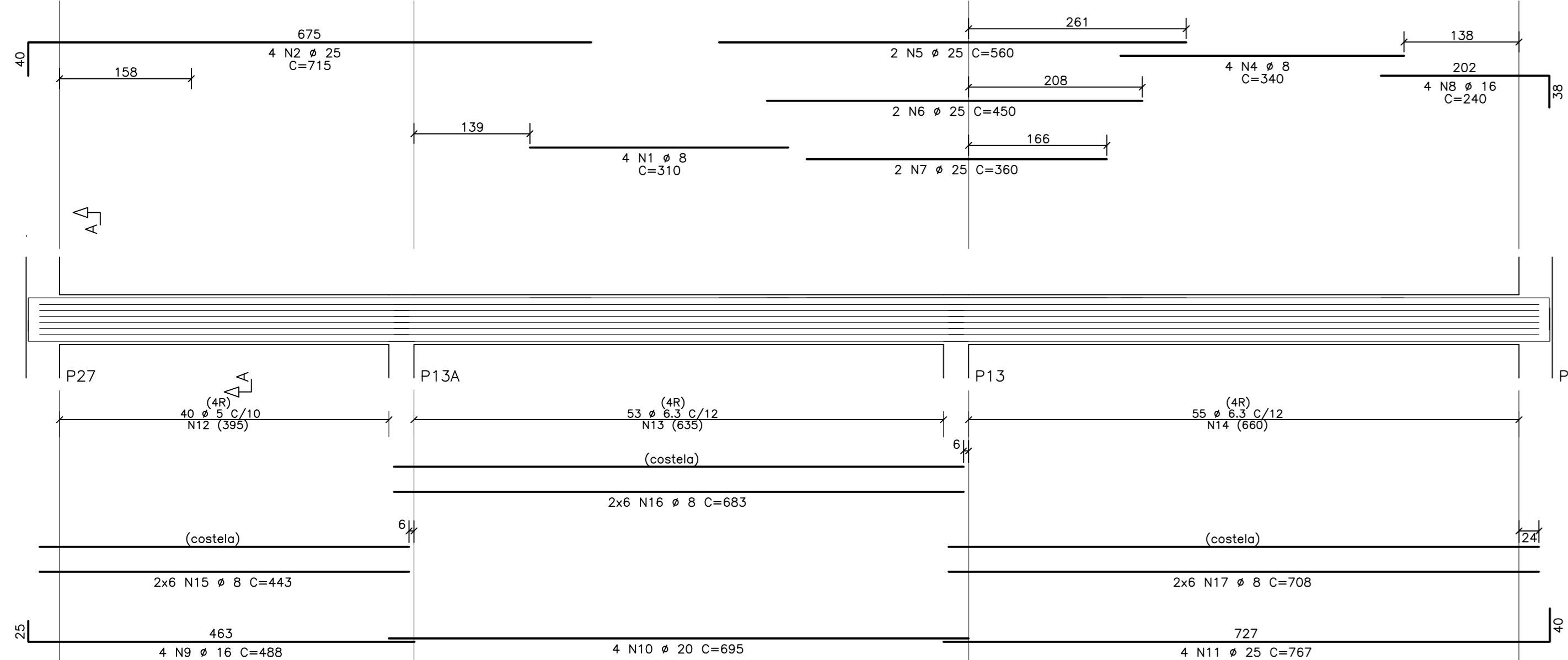


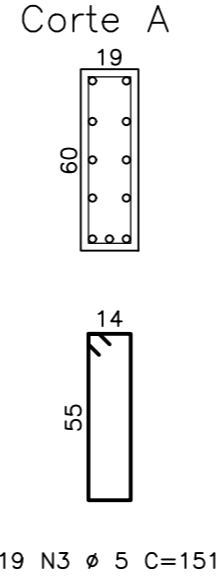
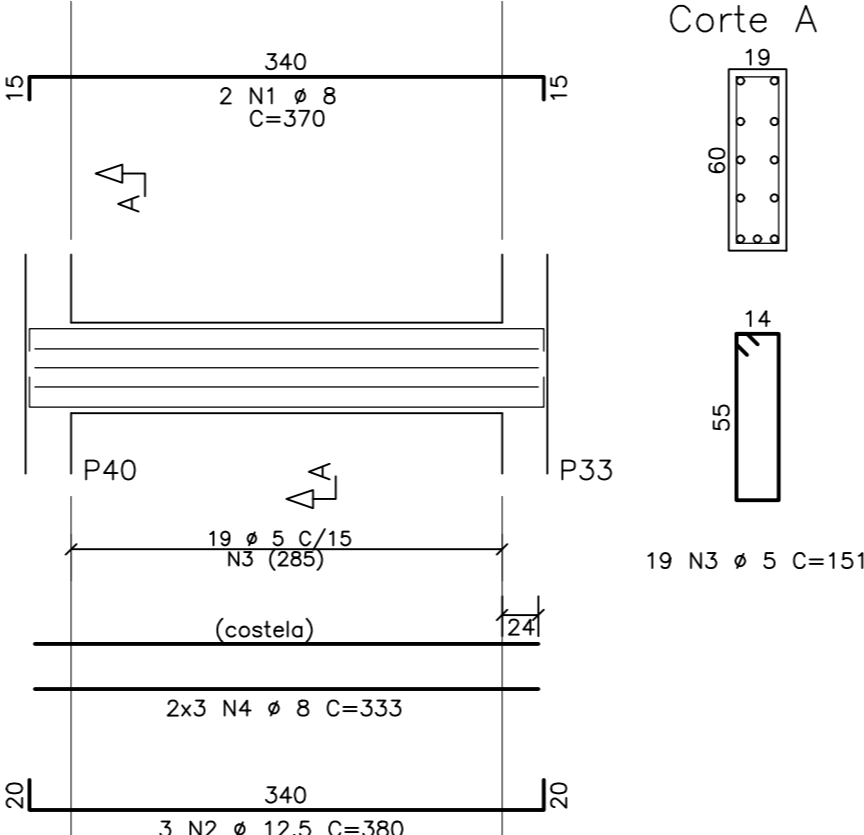
V7 24X60



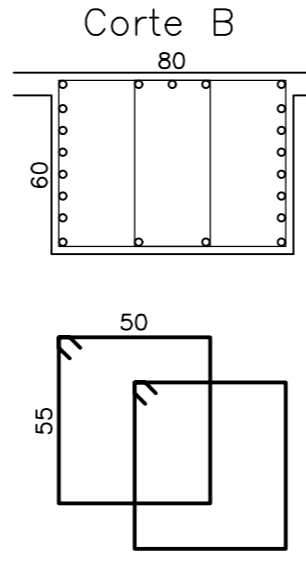
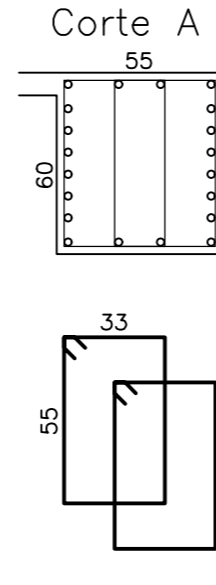
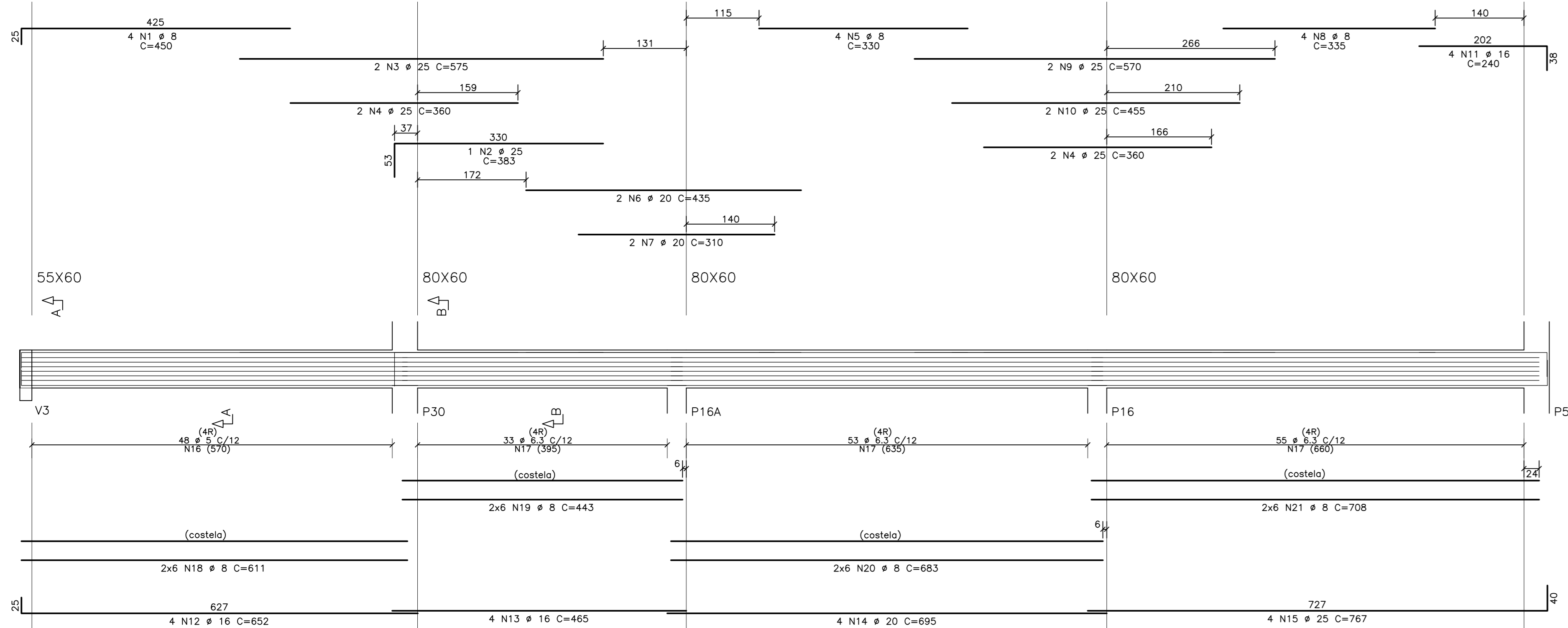
V8 24X60


$$V_9 = V_{10} = V_{11} \quad 60 \times 60$$


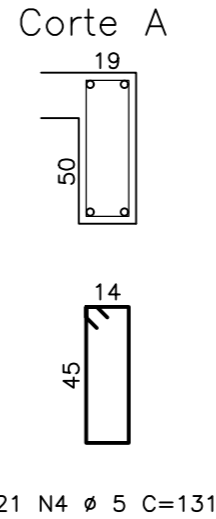
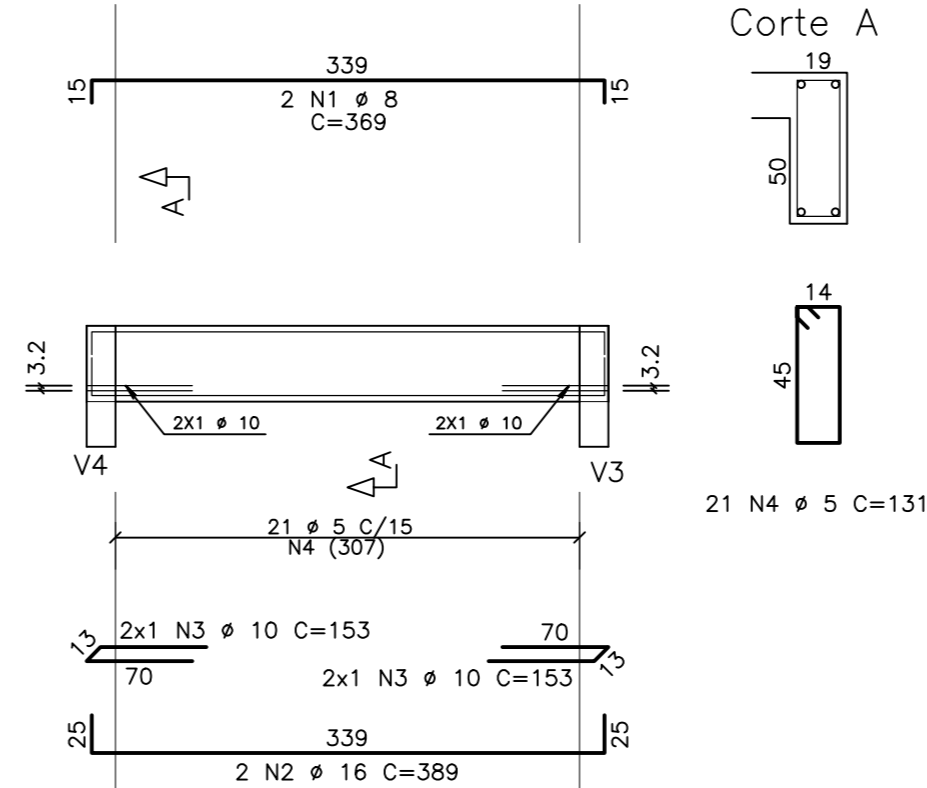
V12 19X60



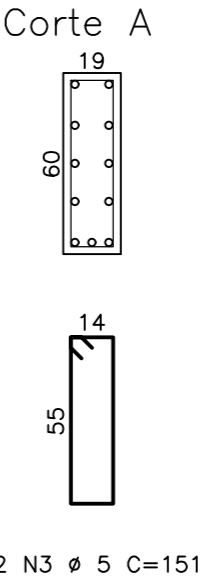
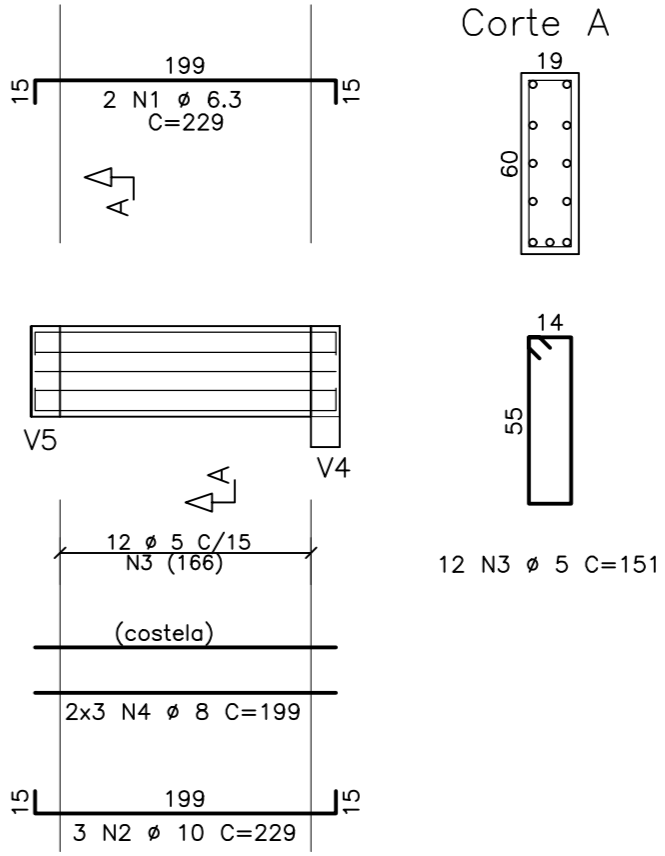
V13



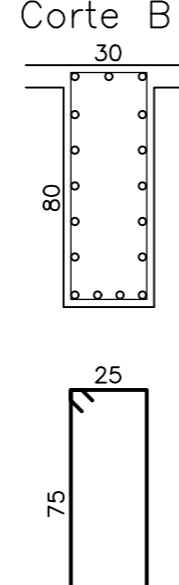
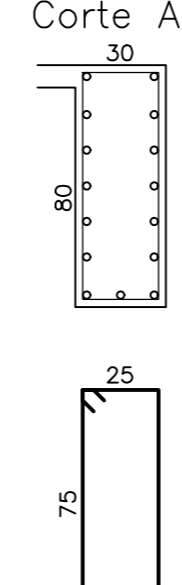
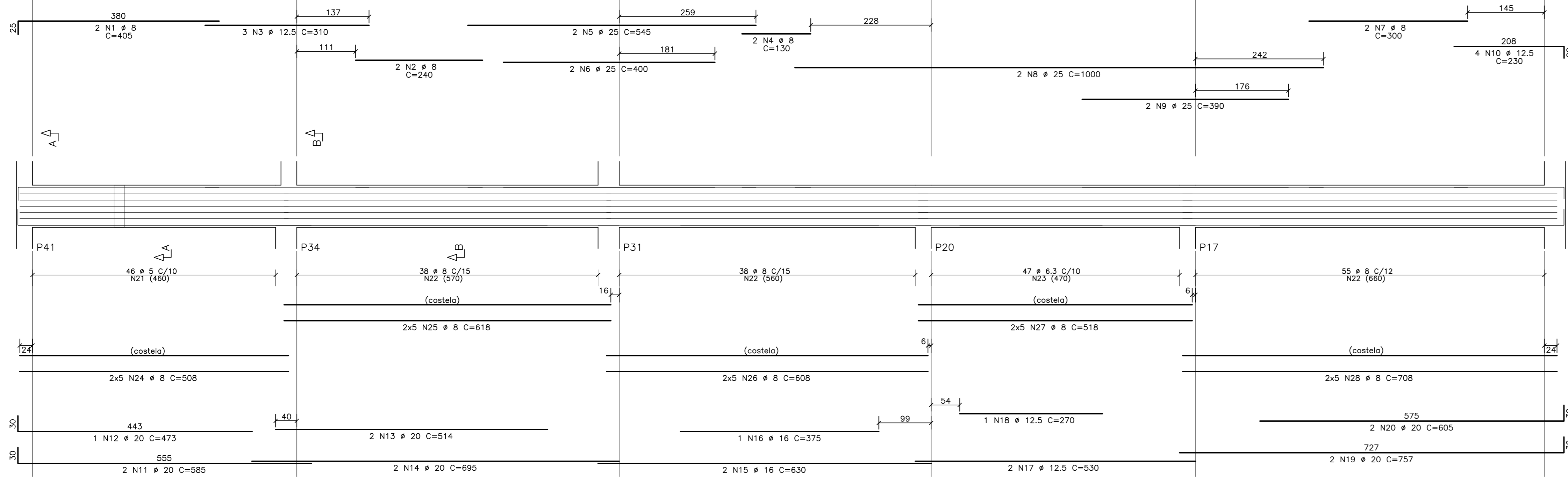
V14 19X5C



V15 19X60



V16 30x80



ELEMENTO	POS	BIT (mm)	QUANT	COMPRIM. UNIT.	
V7		1	6,3	2	280
		2	12,5	2	575
		3	6,3	3	385
		4	12,5	2	240
		5	16	2	540
		6	16	6	615
		7	10	3	170
		8	10	2	750
		9	10	2	750
		11	12,5	2	765
		12	12,5	2	775
		13	5	144	161
		14	5	144	161
		15	8	12	738
V8		1	6,3	2	280
		2	12,5	3	205
		3	16	3	275
		4	6,3	2	275
		5	16	2	525
		6	16	2	525
		8	16	4	240
		9	16	6	615
		10	16	1	500
		11	16	1	500
		12	10	2	240
		13	5	48	755
		15	5,3	85	162
		16	8	6	118
		17	8	6	518
	V9=V10=V11				
	(X5)		1	8	12
	2	25	12	715	
	3	25	6	450	
	4	25	6	560	
	5	25	6	450	
	6	25	6	350	
	8	16	12	240	
	9	16	12	468	
	10	20	12	695	
	11	20	12	717	
	12	5	240	197	
	13	6,3	318	198	
	14	6,3	330	198	
	15	8	36	643	
	16	8	36	683	
	17	8	36	738	
V12					
	1	12,5	3	350	
	2	3	19	151	
	3	3	19	151	
V13		1	8	4	450
		2	25	1	383
		3	25	1	383
		4	25	4	350
		5	25	4	350
		6	20	2	435
		7	8	2	310
		8	8	2	310
		10	25	2	570
		11	25	2	570
		12	16	4	405
		13	16	4	240
		14	16	4	602
		15	16	4	655
		16	5	96	767
	17	6,3	282	224	
	18	8	12	111	
	19	8	12	443	
	20	8	12	443	
	21	8	12	683	
	21	8	12	708	
V14		1	8	2	369
		2	16	2	389
		3	10	1	153
		4	5	21	331
V15		1	6,3	2	229
		2	12,5	2	151
		3	5	12	15
		4	8	6	19
V16		1	8	2	405
		2	16	2	240
		3	12,5	3	310
		4	6,3	2	130
		5	16	2	545
		6	16	2	545
		7	8	2	300
		8	8	2	300
		9	25	2	1000
		10	25	2	930
		10	25,5	4	230
		12	20	3	585
		13	20	3	473
		14	20	3	695
		16	16	1	375
		17	12,5	2	775
		18	12,5	1	270
	21	5	46	112	
	22	8	131	215	
	23	6,3	47	114	
	24	8	10	508	
	25	8	10	508	
	26	8	10	608	
	27	8	10	518	
	28	8	10	608	

RESUMO ACO CA 50-60			
ACO	BIT (mm)	COMPR (m)	PESO (kg)
60B	5	1136	175
50A	6,3	2183	535
50A	8	1944	768
50A	10	622	38
50A	12,5	345	81
50A	16	222	351
50A	20	226	557
50A	25	388	1494
Peso Total		60B =	175 kg
Peso Total		50A =	3823 kg

ELEMENTOS DETALHADOS:
V7 / V8 / V9=V10=V11 / V12 / V13
V14 / V15 / V16

NORMAS RELACIONADAS

<ul style="list-style-type: none"> - NBR 6118/2014 - NBR 9088/2003 - NBR 6120/2019 - NBR 6123/1988 - NBR 14432/2001 - NBR 14931 - NBR 15200/2012 - NBR 15421 - NBR 15575/2013 	<ul style="list-style-type: none"> - PROJETO DE ESTRUTURA EM CONCRETO – PROCEDIMENTO; - AÇÕES E SEGURANÇA NAS ESTRUTURAS – PROCEDIMENTO; - AÇÕES PARA CÁLCULO DE ESTRUTURAS E EDIFICAÇÕES; - FORÇAS DEVIDAS AO VENTO EM EDIFICAÇÕES; - EXIGÊNCIAS DE RESISTÊNCIA AO FOGO DE ELEMENTOS CONSTRUTIVOS DE EDIFICAÇÕES - EXECUÇÃO DE ESTRUTURAS DE CONCRETO – PROCEDIMENTO; - PROJETO DE ESTRUTURAS DE CONCRETO EM SITUAÇÃO DE INCÊNDIO; - PROJETO DE ESTRUTURAS RESISTENTES A SISMOS – PROCEDIMENTO; - DESEMPENHO DE EDIFICAÇÕES HABITACIONAIS;
--	--

TABELA DE COBRIMENTOS (CONTROLE RIGOROSO)				
ELEMENTO	FUNDAÇÕES	PILARES	VIGAS	LAJES
COBRIMENTO	4,0 cm	2,5 cm	2,5 cm	2,0 cm

A	EMISSÃO INICIAL	HELDER	AMÉRICO	22/01/2025
EMS	DESCRIÇÃO	REVISÃO POR	RESP. TÉCNICO	DATA
				
				
				
				
				
				
				
				
				
				
				
				
				
				
				
				
				
				
				
				
				
				
				
				
				
				
				
				